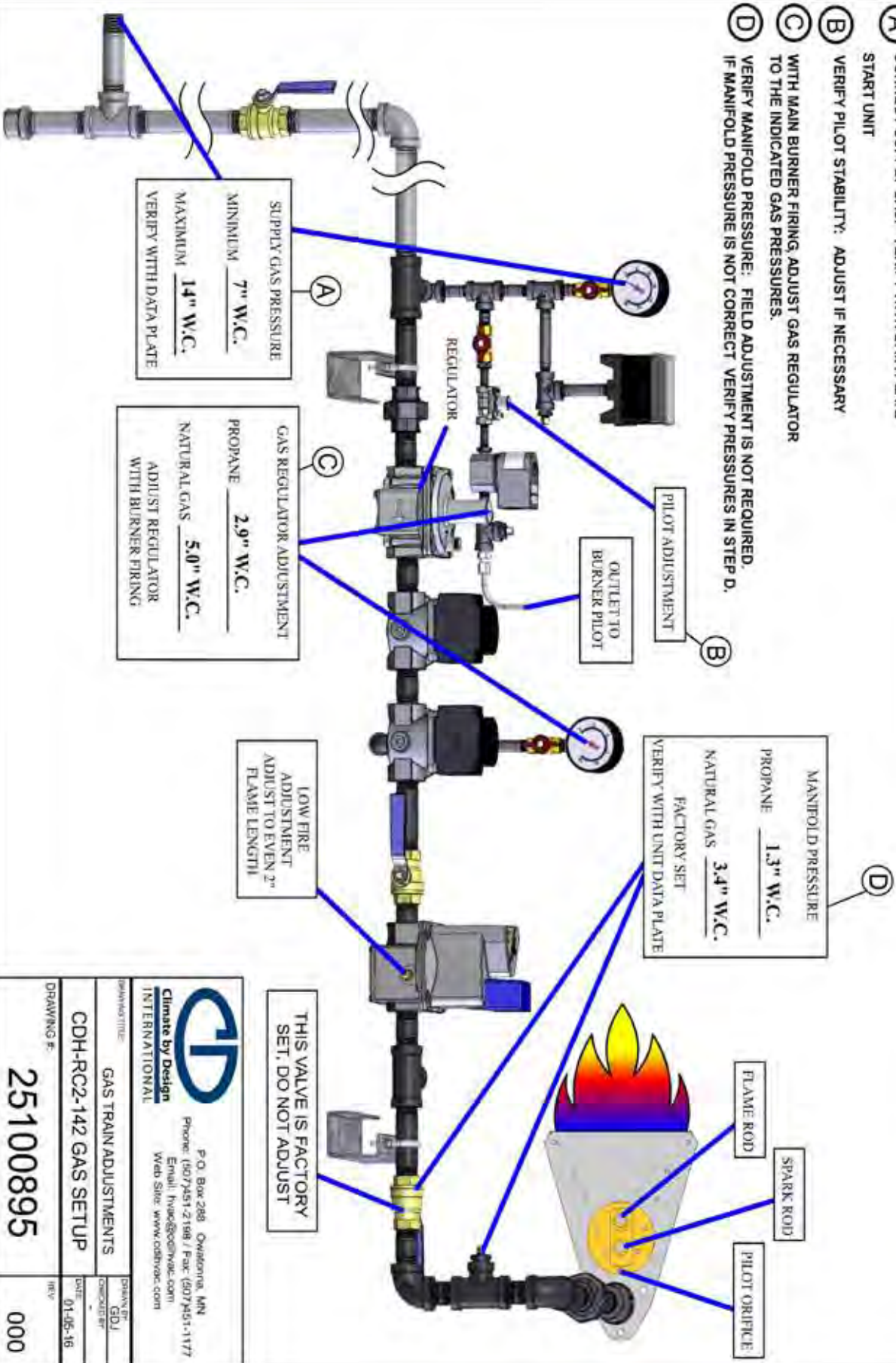


# ARID-Dry MS-7500/6500/5500

## GAS TRAIN SETUP PROCEDURE

- (A)** CONNECT SUPPLY GAS: VERIFY WITH DATA PLATE START UNIT
- (B)** VERIFY PILOT STABILITY: ADJUST IF NECESSARY WITH MAIN BURNER FIRING, ADJUST GAS REGULATOR TO THE INDICATED GAS PRESSURES.
- (C)** VERIFY MANIFOLD PRESSURE: FIELD ADJUSTMENT IS NOT REQUIRED. IF MANIFOLD PRESSURE IS NOT CORRECT VERIFY PRESSURES IN STEP D.
- (D)** VERIFY MANIFOLD PRESSURE: FIELD ADJUSTMENT IS NOT REQUIRED. IF MANIFOLD PRESSURE IS NOT CORRECT VERIFY PRESSURES IN STEP D.



**Climate by Design INTERNATIONAL**

P.O. Box 288 Owatonna, MN  
 Phone: (507)451-2188 / Fax: (507)451-1177  
 Email: hvac@cbdinc.com  
 Web Site: www.cbdhvac.com

DRAWING TITLE: **GAS TRAIN ADJUSTMENTS**

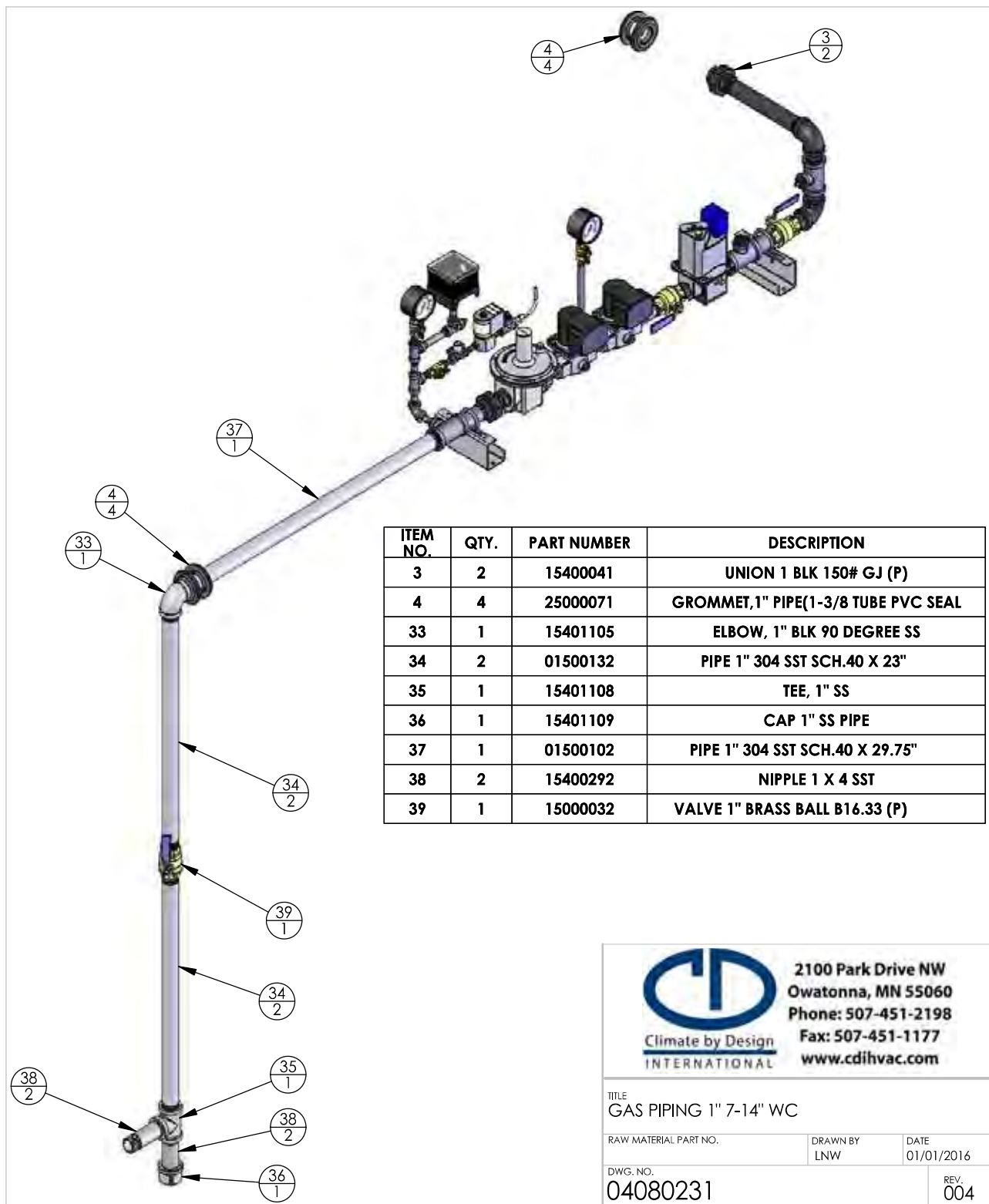
DRAWN BY: **GDJ**

CDH-RC2-142 GAS SETUP

DATE: **01-05-16**

DRAWING #: **25100895**

REV: **000**



ITEM NO.	QTY.	PART NUMBER	DESCRIPTION
3	2	15400041	UNION 1 BLK 150# GJ (P)
4	4	25000071	GROMMET, 1" PIPE(1-3/8 TUBE PVC SEAL)
33	1	15401105	ELBOW, 1" BLK 90 DEGREE SS
34	2	01500132	PIPE 1" 304 SST SCH.40 X 23"
35	1	15401108	TEE, 1" SS
36	1	15401109	CAP 1" SS PIPE
37	1	01500102	PIPE 1" 304 SST SCH.40 X 29.75"
38	2	15400292	NIPPLE 1 X 4 SST
39	1	15000032	VALVE 1" BRASS BALL B16.33 (P)



**2100 Park Drive NW  
Owatonna, MN 55060  
Phone: 507-451-2198  
Fax: 507-451-1177  
www.cdihvac.com**

TITLE  
**GAS PIPING 1" 7-14" WC**

RAW MATERIAL PART NO.	DRAWN BY LNW	DATE 01/01/2016
DWG. NO. <b>04080231</b>		REV. <b>004</b>